

ECA

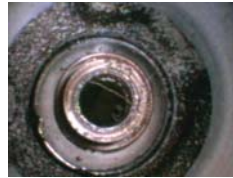
EPSILON Videoscope Systems



EPSILON videoscopes are specially designed for inspection and difficult to access or confined work area.

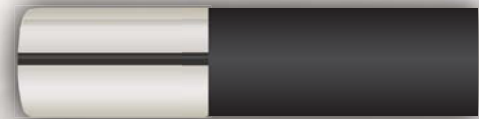
The videoscope performs all the functions of a traditional industrial borescope or fiberscope.

The Videoscope aids mobility, is equipped with an LED light source, TFT display, micro-camera and digital recorder.

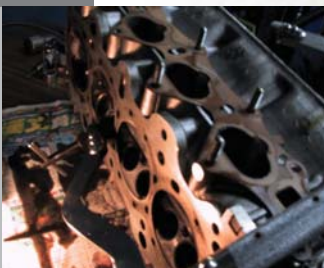


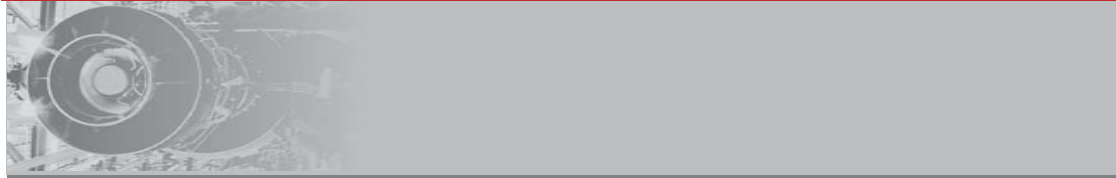
Both technically and economically revolutionary

5.5 mm



Especially designed for the quality control and maintenance markets, a totally different working experience. Use the integral TFT display or connect the image output to a remote monitor or TV - improve communication with customers and plant team members.





FEATURE

5.5mm outside diameter

5.5mm OD probe can be easily inserted through most openings. An extra-wide angle camera takes high resolution 640X480 pictures.

4 superstrength white light LEDs

With 4 high-brightness LED light sources (0~275Lux/4cm), every detail of your target can be illuminated.

Oil and scratch resistant

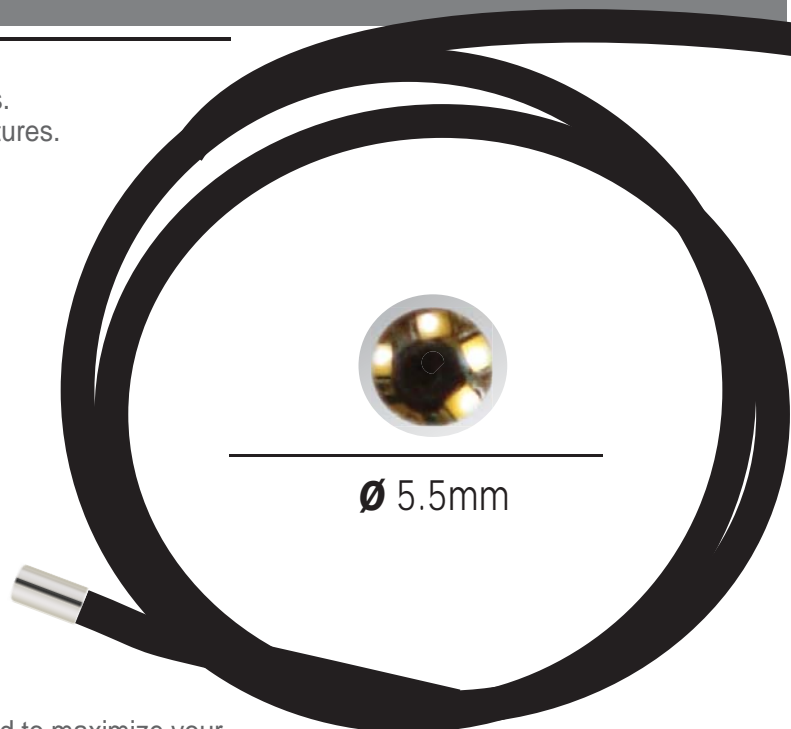
Oil and scratch-resistant tempered glass not only protects the camera, but also maintains the high image resolution.

Optimize illuminant design

The optimized illuminant design can highlight most cracks and burn marks on highly reflective surfaces.

Replace probe/camera assembly in the field

You can easily install different probe assemblies right in the field to maximize your inspection time -1M, 2M, 3M, 10M, 20M and 30M lengths- easily and rapidly.



Real screen shots

Note minimal image loss



Industrial Boroscope Image



Videoscope Image



Which image gives you the results you need, the traditional industrial boroscope image on the left with its 'peep-hole' image...or the Epsilon Videoscope's full image on the right - the choice is obvious!



Stepless illumination adjustment

Easy to use operating system designed for professionals. You can now finish all tasks quickly and efficiently. In addition, the skidproof, antishock, ergonomics design allows greater mobility and enhanced images.



3.5 " Extra-wide and clear TFT monitor

3.5 " Extra-wide view angle and clear TFT monitor, protected by oil and scratch resistant tempered glass



Photograph and record rapidly

You can photograph and record rapidly and accurately, even with your gloves on!



The video output (TV Out) function can transfer video images to a remote monitor or TV, to facilitate discussion and communication.



Video output AC jack

You can perform all tasks with easy to operate multi-function keys.



Multifunction key

FEATURE

Professional videoscope

A professional videoscope designed for professionals. You can operate this system accurately and rapidly with your gloves on!

Portable product

There's no longer any need for dragging around that "luggage-sized" borescope.

Operates up to 4 hrs on a single charge

Equipped with a high capacity battery, work and record for up to 4 hours continuously after being charged for 2 hrs. The 512MB memory card can also hold 14,000 photos. You can manage and mail these photos as a working report on your desktop PC after they're transferred through a USB cable.

3.5" Extra-wide view angle TFT

3.5 " Extra-wide view angle and clear TFT, protected by oil and scratch resistant tempered glass

Insertion Tube & Light Source Specification

Image Sensor	CMOS Image Sensor
Resolution (Dynamic / Static)	320(H)*240(V) / 640(H)*480(V)
Size	
Tip (Insertion Tube) Diameter	5.5mm
Insertion Tube Length	1M~30M
Frame rate	~30 fps
S/N Ratio	42dB
Exposure	Automatic
White balance	Fix
Field of View (FOV)	67°
Depth of Field (DOF)	1.5cm~10cm
Light Source	4 White LED



System Specification

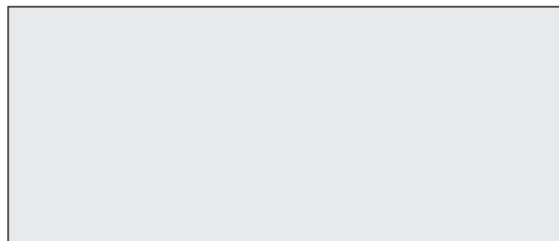
Power	100-220VAC to 5.5 Volt DC
Display	3.5" TFT LCD Monitor 320*240 Pixels
Interface	Mini usb 1.1/ AV out / AV in/
Battery	Rechargeable Li-Polymer Battery (3.7V)
Video Out Format	NTSC & PAL
Recording medium	SD card (512 Mb, upgradeable to 2G)
Compression Format	MPEG4
Still Image Storage Format	JPEG (640 x 480)
Video Recording Format	ASF (320 x 240)
Language	English (French or Spanish available in future)

Function

Quick Snap
Quick Video Recording
Quick Review
AV Out
VideoPicture Viewer

Ordering Information

Available :	Optional Accessories:
Available Probes (in Meters): 1M, 2M, 3M, 5M, 10M, 20M & 30M	- 6M35 35 deg screw-on mirror - 6M45 45 deg screw-on mirror - 6M60 60 deg screw-on mirror



EPSILON Controls & Automation
102, Shiv-Shakti Industrial Premise,
Opp. Damodar Park, L.B.S. Marg
Ghatkopar (West). MUMBAI - 400 086.
Tel:091-22-2500 4225. Fax:091-22-2500 3590.
email: info@epsilonfiberoptics.com